



# MetPac-SA

Driving Sustainable Metal Packaging

Presented by:

Kishan Singh

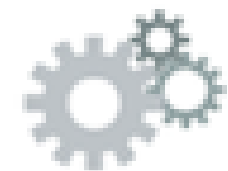
DPhil (Metal Packaging Sustainability)

MetPac-SA NPC (2017/216419/08)



# Navigating the next industrial revolution

Revolution	Year	Information
------------	------	-------------



1

1784

Steam, water, mechanical production equipment



2

1870

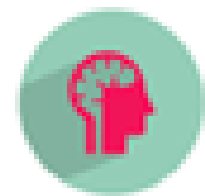
Division of labour, electricity, mass production



3

1969

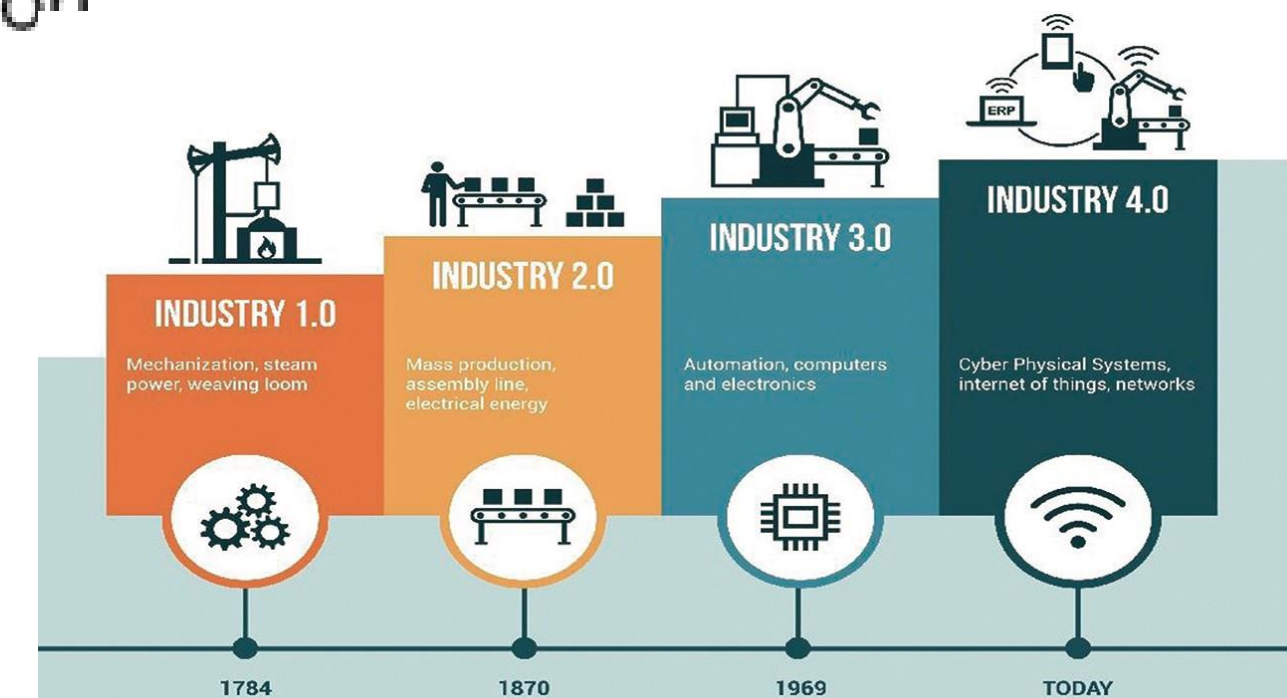
Electronics, IT, automated production<sup>n</sup>



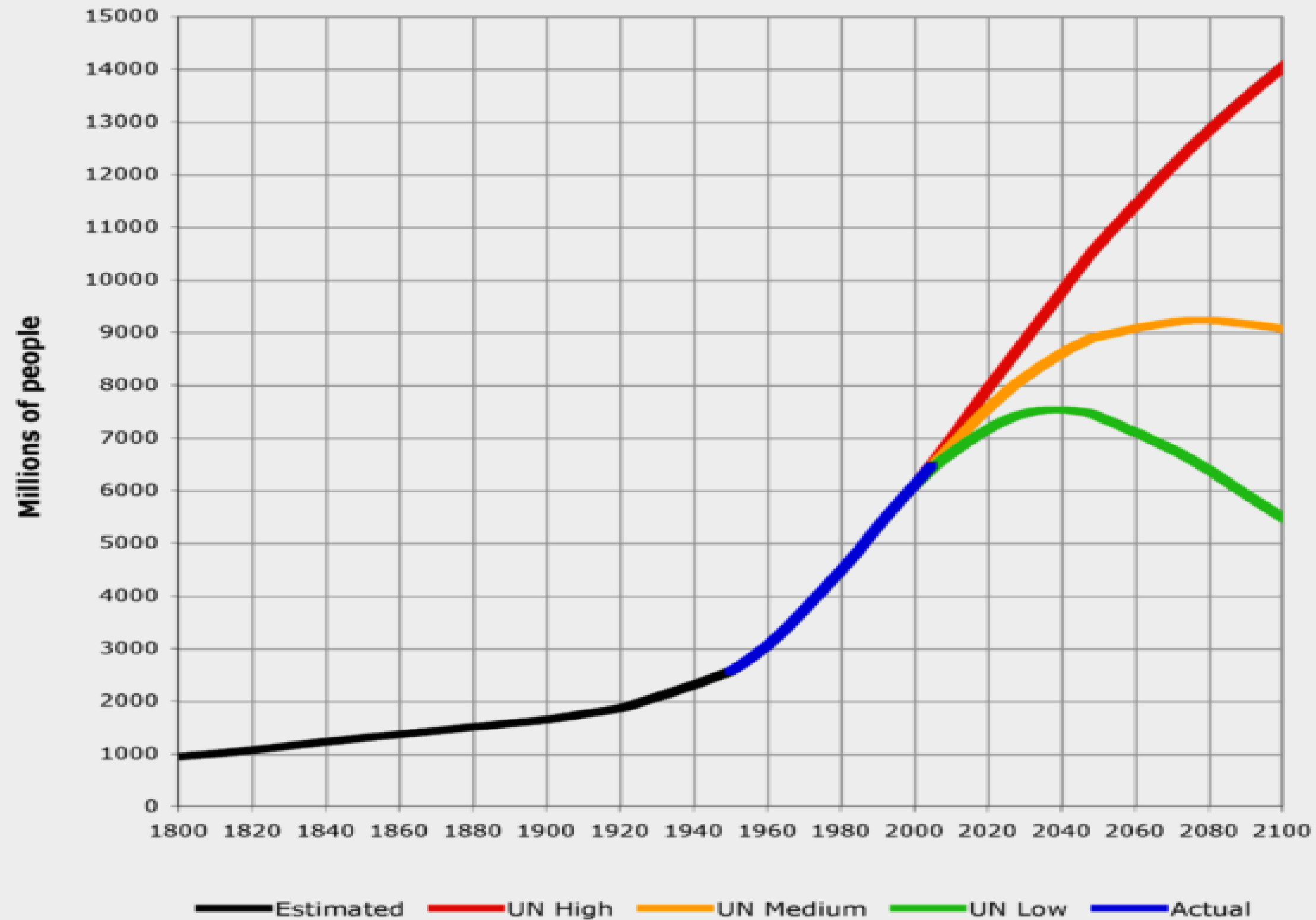
4

?

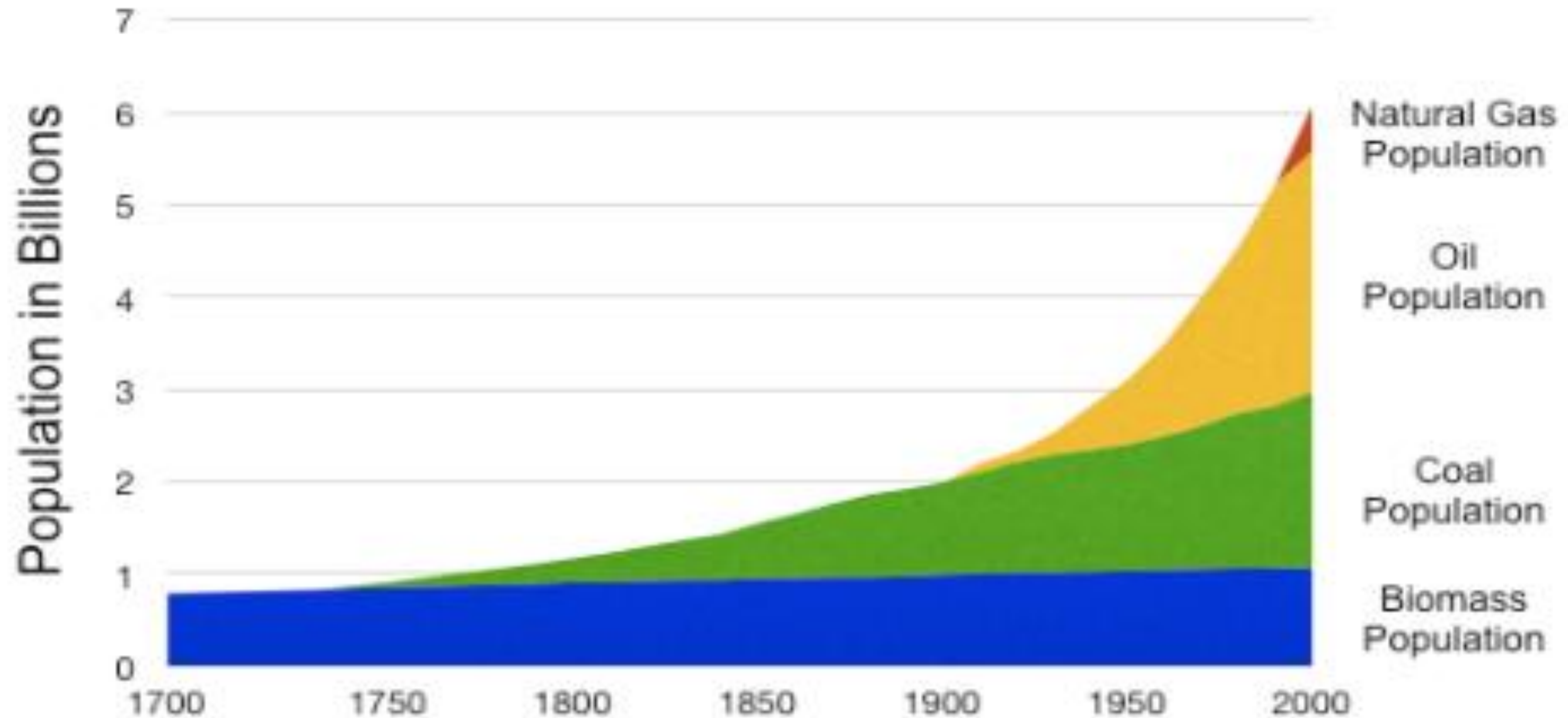
Cyber-physical systems



# Global Human Population Shock



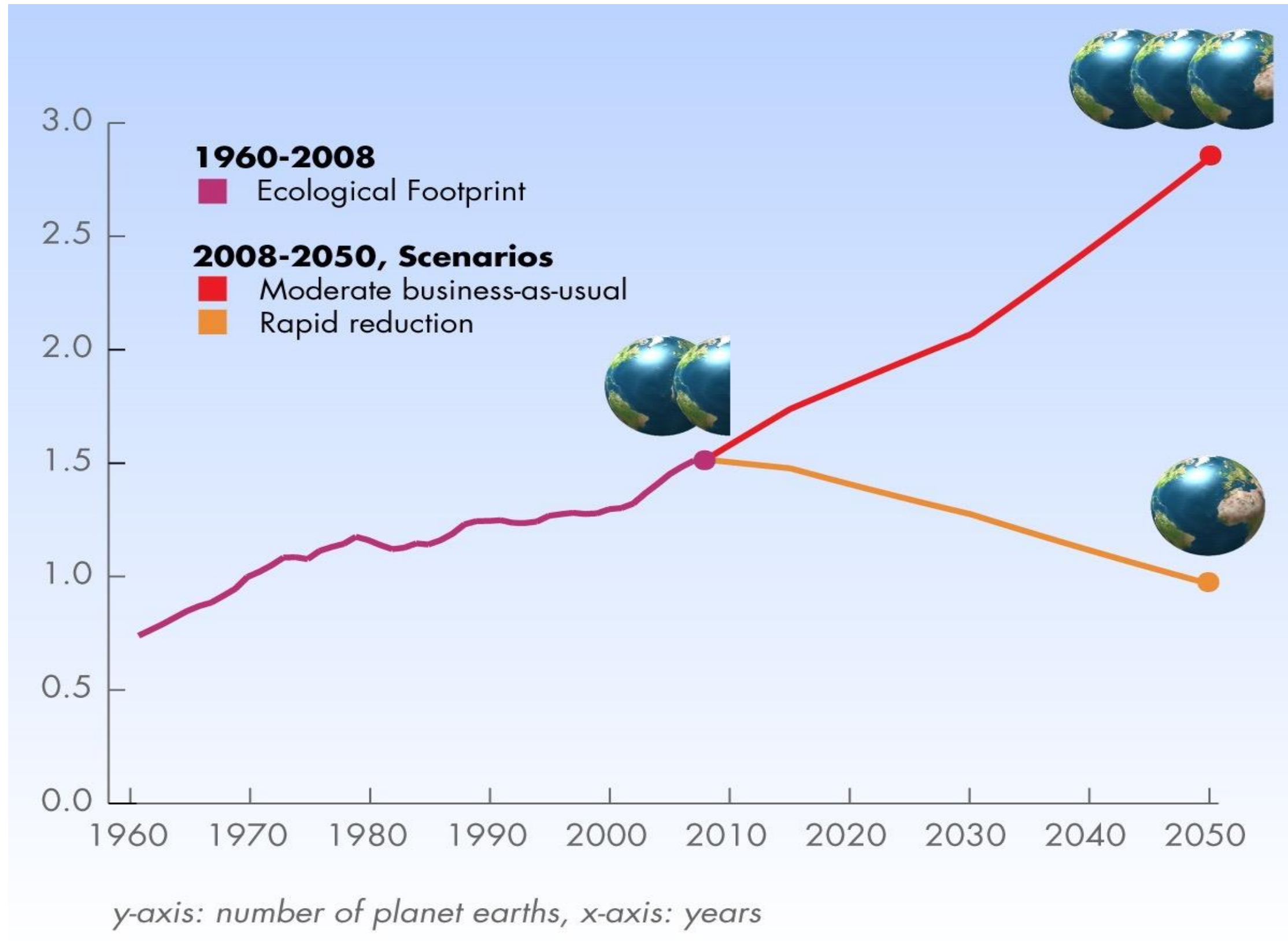
# Natural Resource Consumption against Time

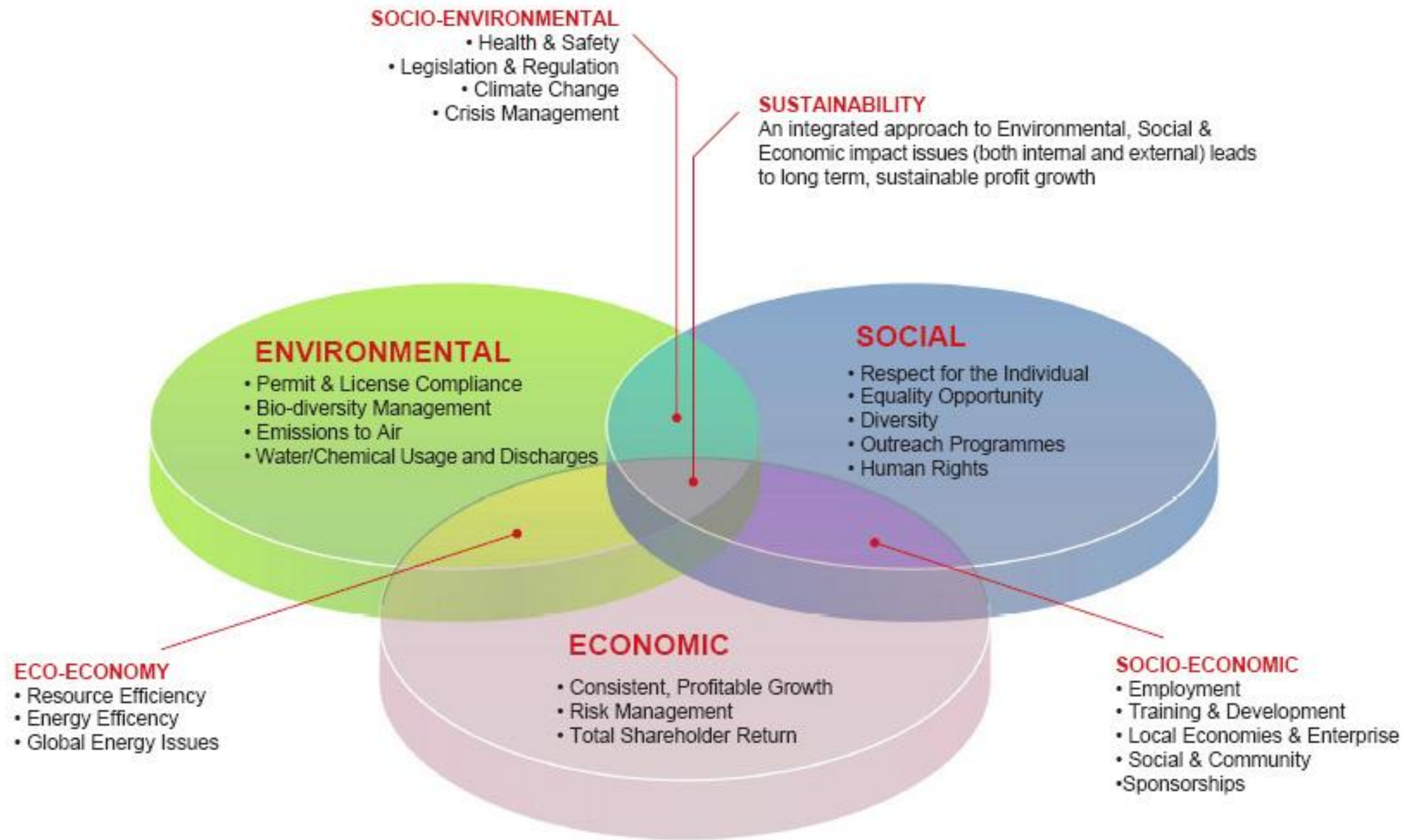


Data: *Population and Energy*, Graham Zabel  
Graph: [PostPeakLiving.com](http://PostPeakLiving.com)



# More planets necessary





Triple Bottom Line  
Planet Profit People



# Three fundamental principles of Circular Economy



**DESIGNING OUT  
WASTE AND  
POLLUTION**

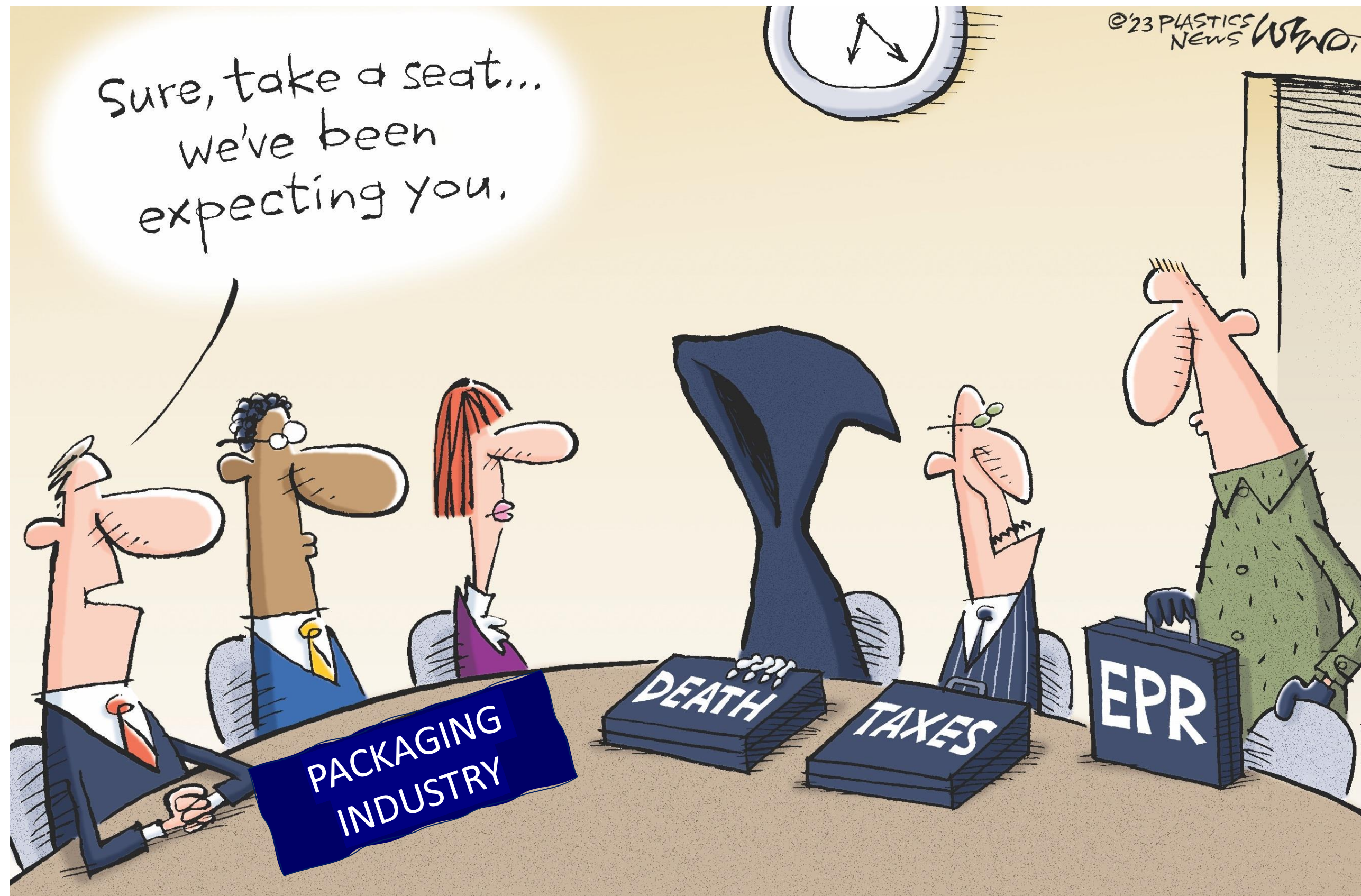


**KEEPING  
PRODUCTS AND  
MATERIALS IN USE**



**REGENERATING  
NATURAL  
SYSTEMS**









# Circular Economy



Keeping materials in a cyclic loop, reducing the need to use new materials







# MetPac-SA

Driving Sustainable Metal Packaging



MetPac-SA NPC (2017/216419/08)





# SA'S PACKAGING MARKET in context

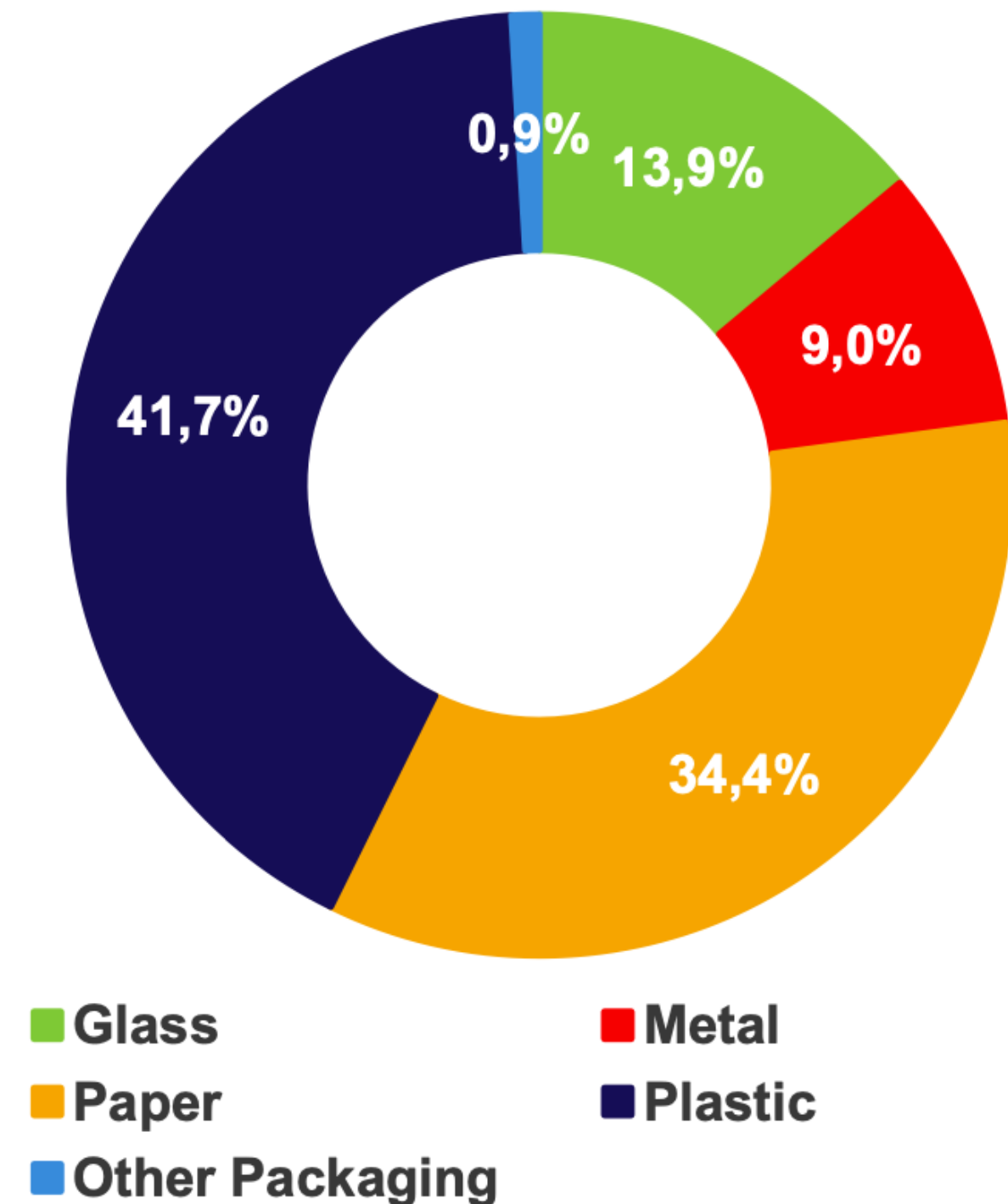
SOURCE: BMI

 000 TONS	Total Packaging Market		
Volume	2023		Value(R Mil)
1 127	 Glass		R12 183
182	 Metal		R7 872
1 185	 Paper and Board		R30 167
870	 Plastic		R36 571
141	 Other		R825
3 506	Total		R87 618

# SA'S PACKAGING MARKET

SOURCE: BMI

Total Packaging Market Value  
R87 618 Million  
(Ex Converter 2023)

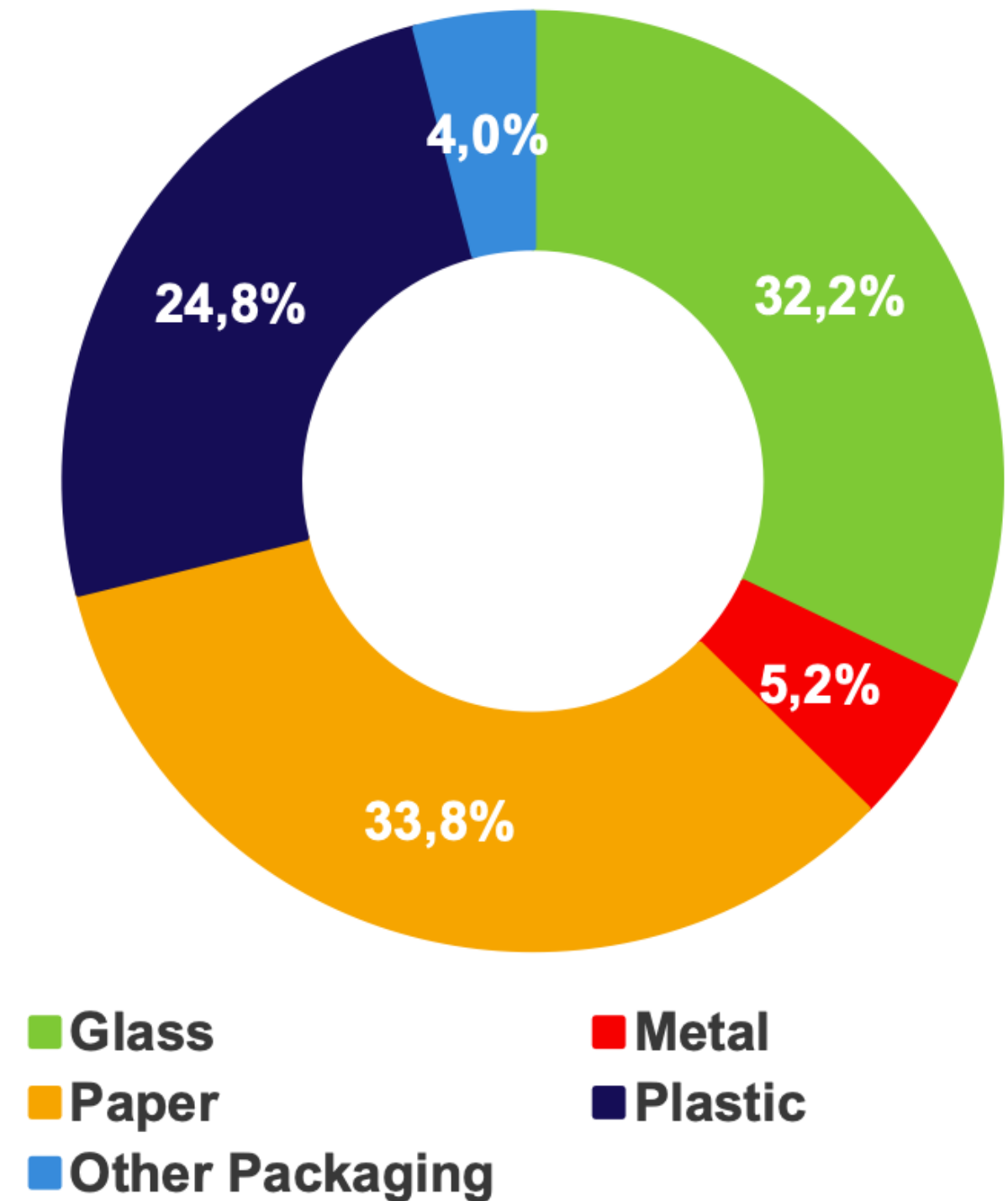




# SA'S PACKAGING MARKET

SOURCE: BMI

Total Packaging Market Volume  
3 505 691 Tons  
(Ex Converter 2023)



# MISSION

Our mission, as the PRO of choice for metal packaging in SA, is to establish the metal packaging industry as a valuable contributor to environmental sustainability through the investment in post consumer packaging recovery and re-utilisation





# WE REPRESENT



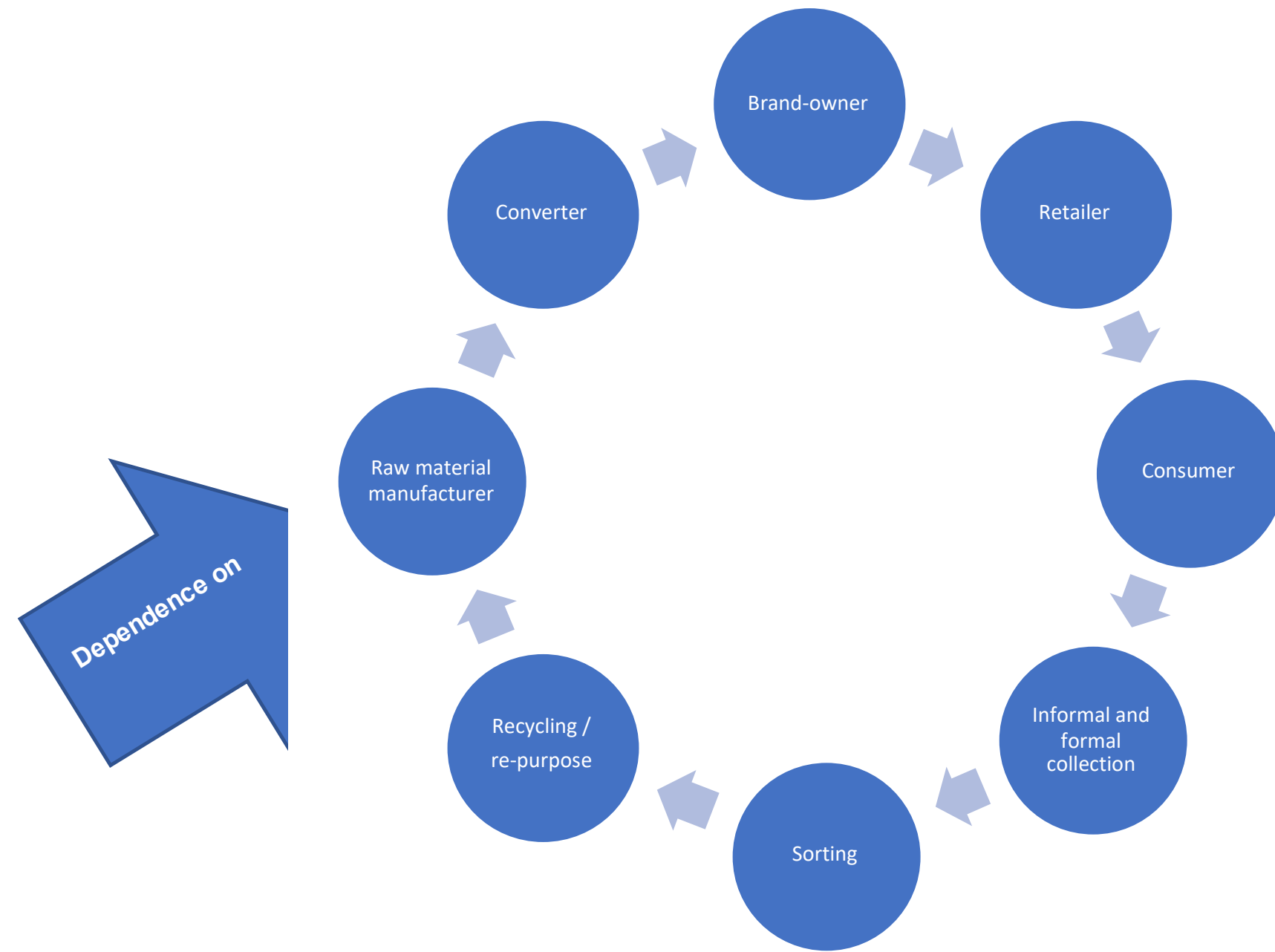
Aluminium  
Ferrous /  
Steel  
Aerosols

# WE DO NOT REPRESENT



Metal drums

# EPR / PRO Operational Framework



# OUR MEMBERS

MetPac-SA has a total of 76 member (March 2024.)

- Funding through EPR Fee
- EPR Fee calculation based on operational requirements and cost, aligning with DFFE guideline

	UBC	Foil	Aerosols	Other	Total
Tinplate	N/A	N/A	7	40	47
Aluminium	20	30	8	N/A	58

Please note:

The numbers reflected in the table above are not mutually exclusive,  
as some organisations are tinplate and aluminium members.



# MetPac-SA Strategic Partners





## Key Performance Indicators



# MetPac-SA

Driving Sustainable Metal Packaging

## WASTE PICKER INTEGRATION

- Ongoing challenge with SAWPRS National Registration Database since introduction
- PRO's willing to make waste picker service fee payment, however no workable solution to facilitate payment
- Engagement sessions held with key stakeholders including African Reclaimers Organisation (ARO)
- Decision by majority stakeholders to use Lariat Waste Picker service fee software to facilitate waste picker service payment







## STUDENT RESEARCH PROJECT

### ***“Consumer Practices And Challenges In Recycling Metal Packaging In South Africa”***

- 28 student researchers from 5 universities across South Africa was recruited
- The research project promoted skills development, temporary job creation and community engagement.
- This initiative not only equipped students with valuable insights into metal packaging recycling but also encouraged them to develop practical solutions to industry challenges.
- By promoting young researchers' involvement in environmental sustainability, MetPac-SA continues to drive innovation in recycling, support professional growth, and create job opportunities within the sector.

# MetPac-SA Quality Management System

---

MetPac-SA is in the process of ISO 9001:2015 QM certification

- Aligns with global best practices
- Enhanced operational efficiency and service provision
- Initiative aligns with the requirements of Section 18 of the National Environmental Management
- Supports the organization's commitment to continuous improvement
- Enhances risk management







THANK YOU!



**MetPac-SA**

Driving Sustainable Metal Packaging

